

Where to start:

You can email or fax in a copy of a plot plan, surveyors report, real property report or hand drawn diagram. (examples are below) Look closely at the document to ensure the dimensions are indicated. The dimensions will appear alongside lines indicating where the measurements were taken. Measurements in circles most often indicate elevations, and are not required for our estimating purposes.

Ensure your street address, name and phone number are on your plan, as we do receive a lot of them.

Our estimate for new yard completion will include the package price for all basic yard elements required for your landscaping deposit to be returned. We are familiar with the requirements in most Edmonton and area neighborhoods, but it doesn't hurt to include a copy of the landscaping requirement pages from your builders package.

What you receive:

You will receive one complete package price estimate that includes:

Basic design drawing.

A final grade guaranteed to pass. (including survey fee)

Top quality Sod, professionally installed.

Fruit or flowering tree of correct caliper measure.

Up to 6 required shrubs.

Decorative rock in high traffic and difficult growth areas.

Mighty Diamond edging at trees and shrub bed.

Foothills mulch at tree bowl and shrub bed.

Up to 10 stepping stones.

Looking for just a little more than the Builders requirements? Ask us about our GOLD package.

What happens next:

If the estimate is in line with your budget, we require a 10% deposit to book your time in our construction calendar.

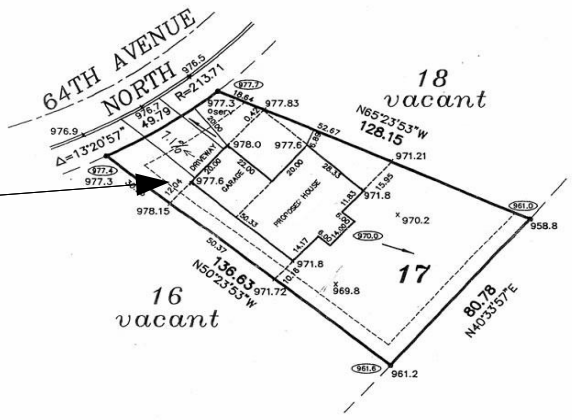
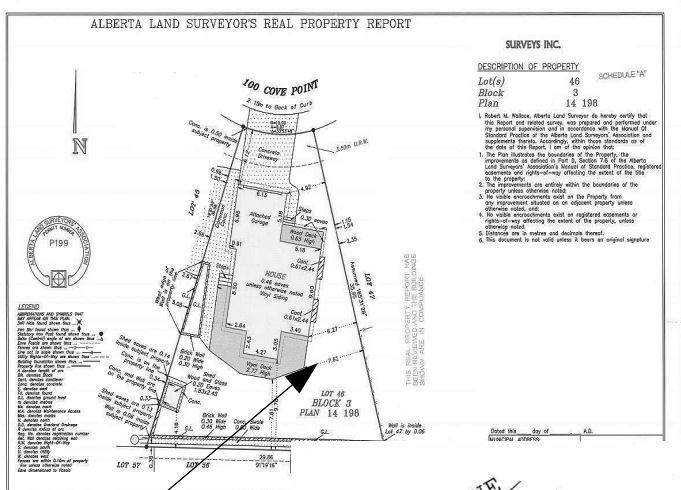
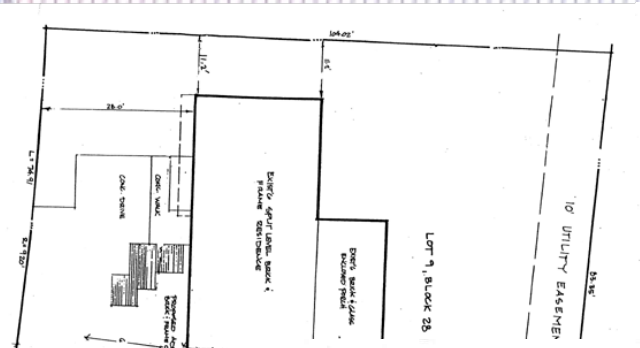
We meet to create the basic design drawing and select your tree and shrubs.

On the first day of construction we require a payment of 40% of the project cost.

On completion of construction, we perform a walkthrough of your yard ensuring the work is completed as specified.

We process the final payment of the remaining amount

You love your landscape and refer us to others.



Look to ensure measurements appear alongside lines indicating where the measurements were taken.

Ready to send your information? info@johnnypaychecklandscaping.com
 Fax also available: 780 930-1194